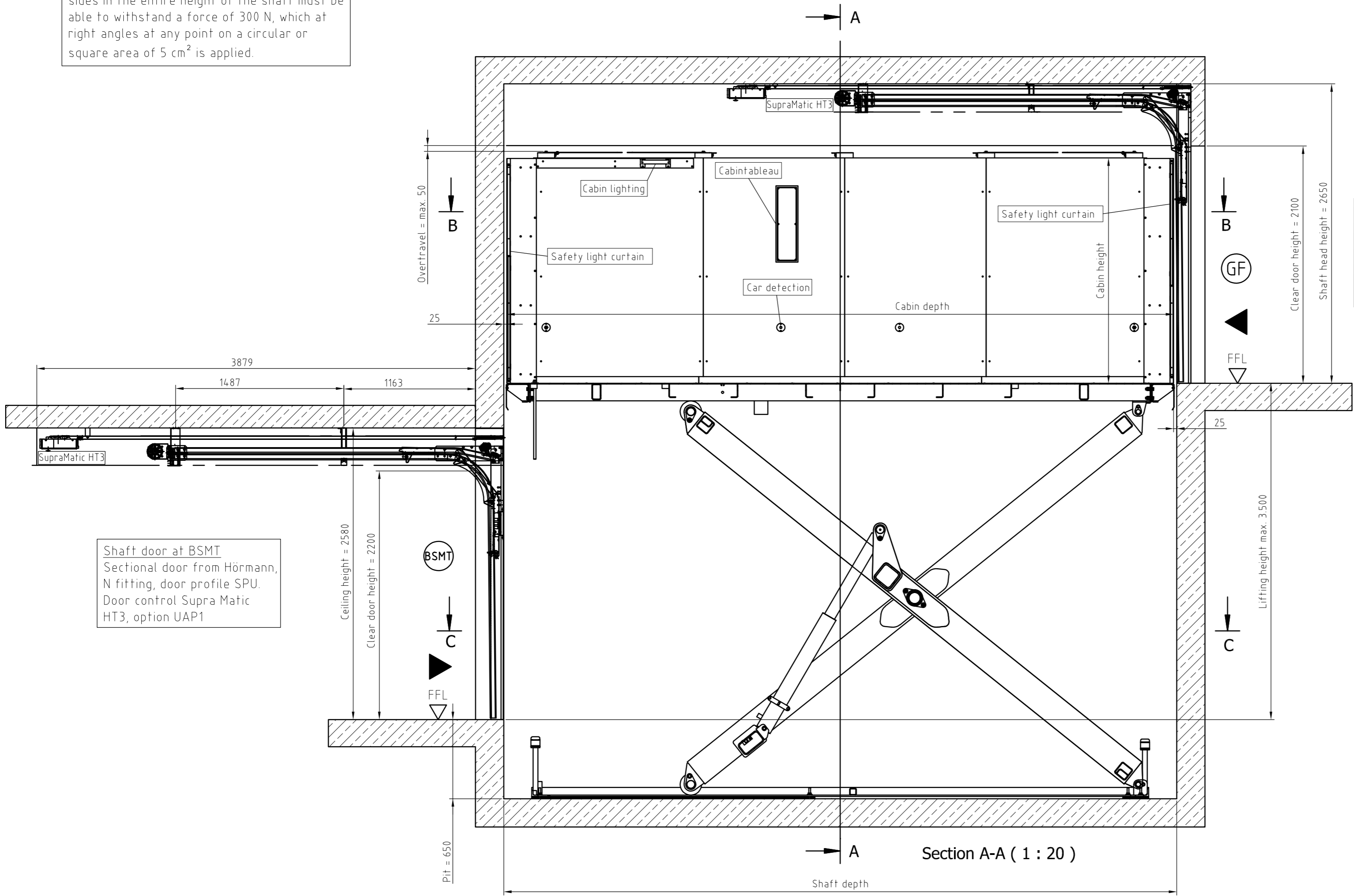


Insulation materials in the area of the access sides in the entire height of the shaft must be able to withstand a force of 300 N, which at right angles at any point on a circular or square area of 5 cm<sup>2</sup> is applied.

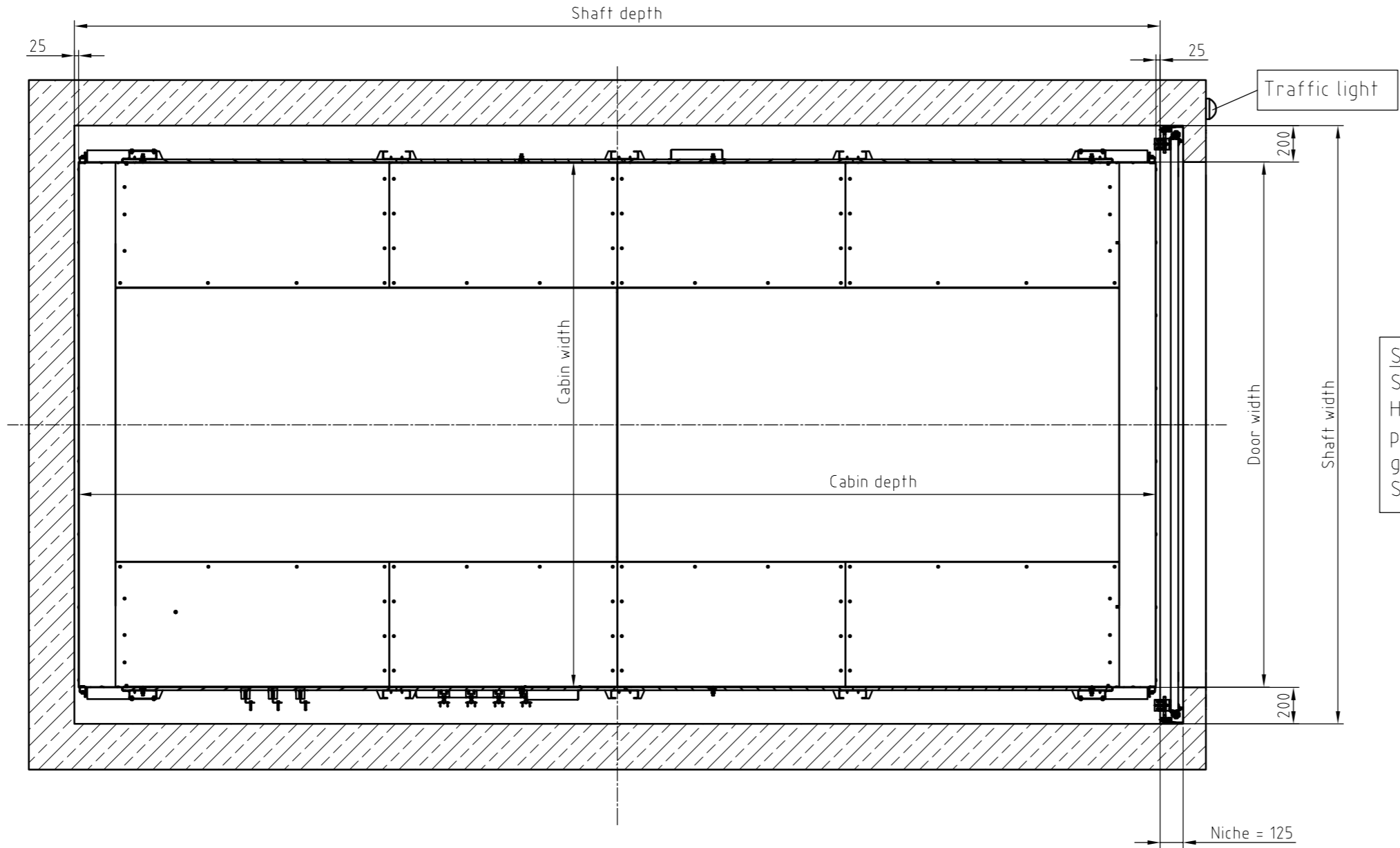


Shaft door at GF  
Sectional door from  
Hörmann, N fitting, door  
profile SPU. Door with  
garage look. Door control  
Supra Matic HT3, option UAP1

Shaft door at BSMT  
Sectional door from Hörmann,  
N fitting, door profile SPU.  
Door control Supra Matic  
HT3, option UAP1

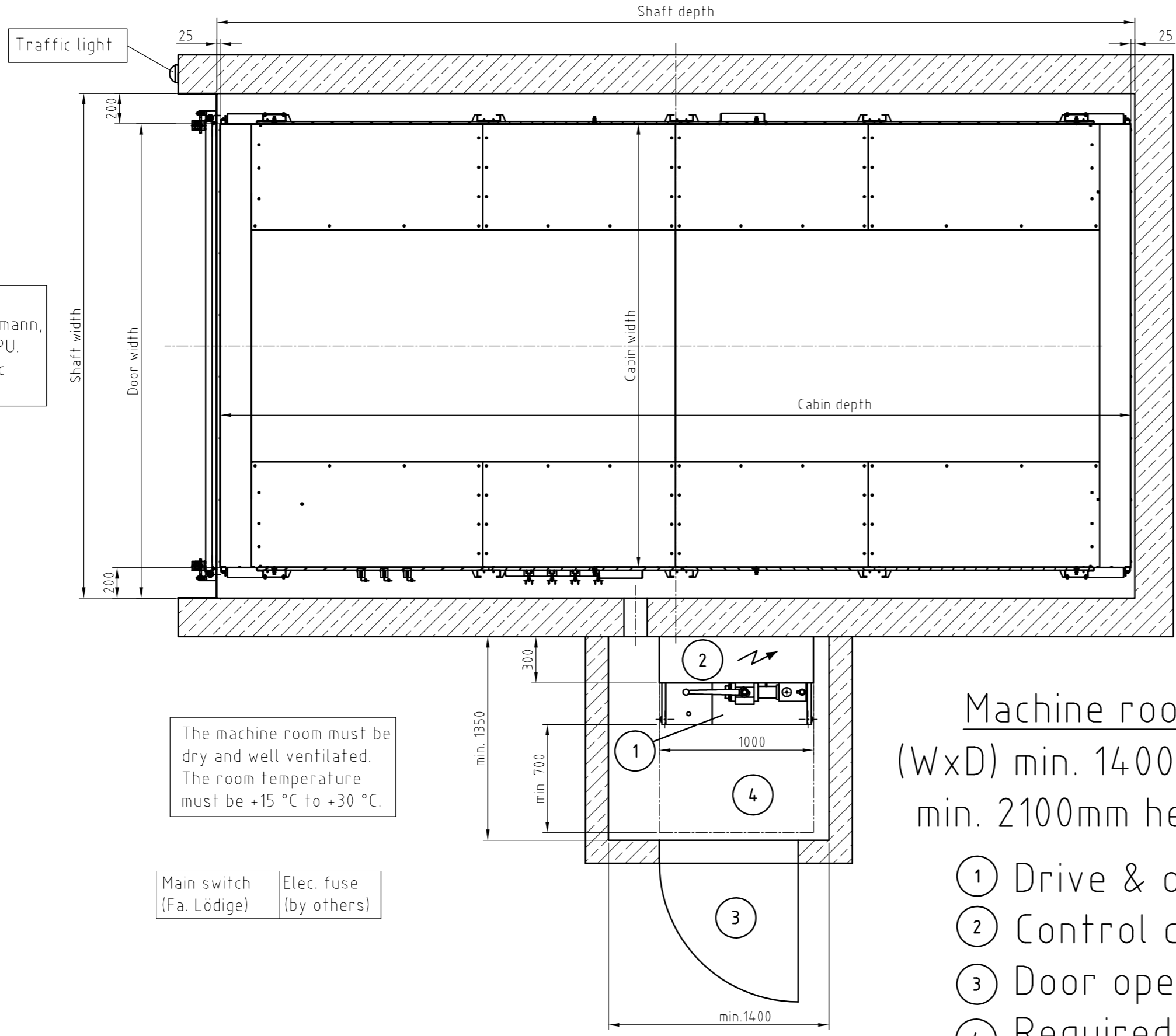
FFL = Finished floor level

Floor plan car lift GF ( 1 : 20 )



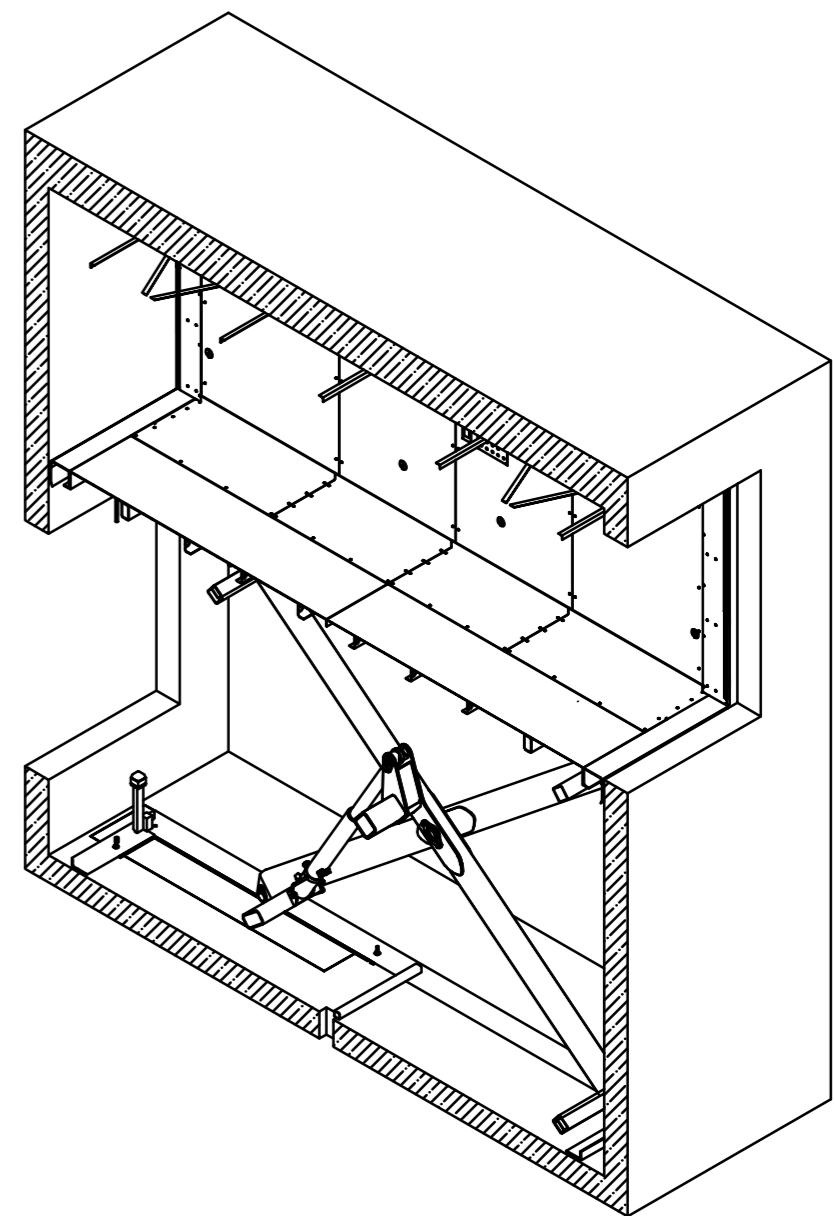
Shaft door at GF  
Sectional door from  
Hörmann, N fitting, door  
profile SPU. Door with  
garage look. Door control  
Supra Matic HT3, option UAP1

Floor plan car lift BSMT ( 1 : 20 )



Machine room  
(WxD) min. 1400x1350  
min. 2100mm height

- 1 Drive & oil pan
- 2 Control cabinet
- 3 Door opens outwards
- 4 Required space



Technical data:  
Technical specifications of the hydraulic car lift VERTICAR.

- Example plant:  
Nominal load:  
max. 0,15 m/s  
Nominal speed:  
60% of the nominal load, max. 1800 kg  
Axle load:  
2500 – 3000 mm  
Cabin width:  
5500 – 6000 mm  
Cabin depth:  
2000 mm  
Cabin height:  
max. 3.500 mm  
Pit:  
650 mm  
Shaft width:  
Cabin width + 400 mm  
Shaft depth:  
Cabin depth + 50mm  
Shaft head height:  
2.525 mm (with facade optic, depending on the door variant)  
Number of stops:  
2  
Entrances:  
2, opposite (through loading) or one above the other  
Machine room:  
min. 14.00x1350x2100 mm (WxDxH)  
1000x1200x300 mm (WxDxH)  
Control cabinet:  
GF – Hörmann Sectional door, N-fitting, door profile SPU  
BSMT – Hörmann Sectional door, N-fitting, door profile SPU  
Shaft doors:  
Machine directive 2006/42/EC and DIN EN 1570-1  
Directive:

The technical data, delivery height, cabin width and cabin depth, as well as the design of the door profiles can be adapted to your wishes after consultation with you.

- Sectional door on holding position by client incl. electric controls:
- input for UP
  - input for DOWN
  - enable signal, door can move
  - dry contact upper door
  - contactrip
  - lightbarrier for obstruction detection in door area
  - secure possibly according standing areas with light curtains

Notice:  
This sample shaft drawing of the VERTICAR® car lift serves only as information material and does not replace the official shaft drawing. An official shaft drawing of the elevator is required for the final and detailed building planning. If necessary and in consultation with you, our sales department and our construction team will adapt this to your building project.

COPYRIGHT & DISCLAIMER  
The content of these drawing template, particularly text and graphics are protected by copyright. Unless indicated otherwise, copyright is held by Lödige Industries GmbH. The content of this document must not be published without the express consent of Lödige Industries GmbH. We reserve the right to make technical changes to the drawing template for the VERTICAR® car lift.

Hydr. car lift VERTICAR after MD 2006/42/EC and DIN EN 1570-1 Nominal speed max. 0.15 m/s			
Year	2022	Model	HT3
Serial	22.03.2022	Version	1.20
Author	Lödige Industries GmbH Witten-Lödige-Str. 1 57475 Witten		
Copyright reserved. Notation as per standard.			
VERTICAR with garage look			VERTICAR TEMPLATE